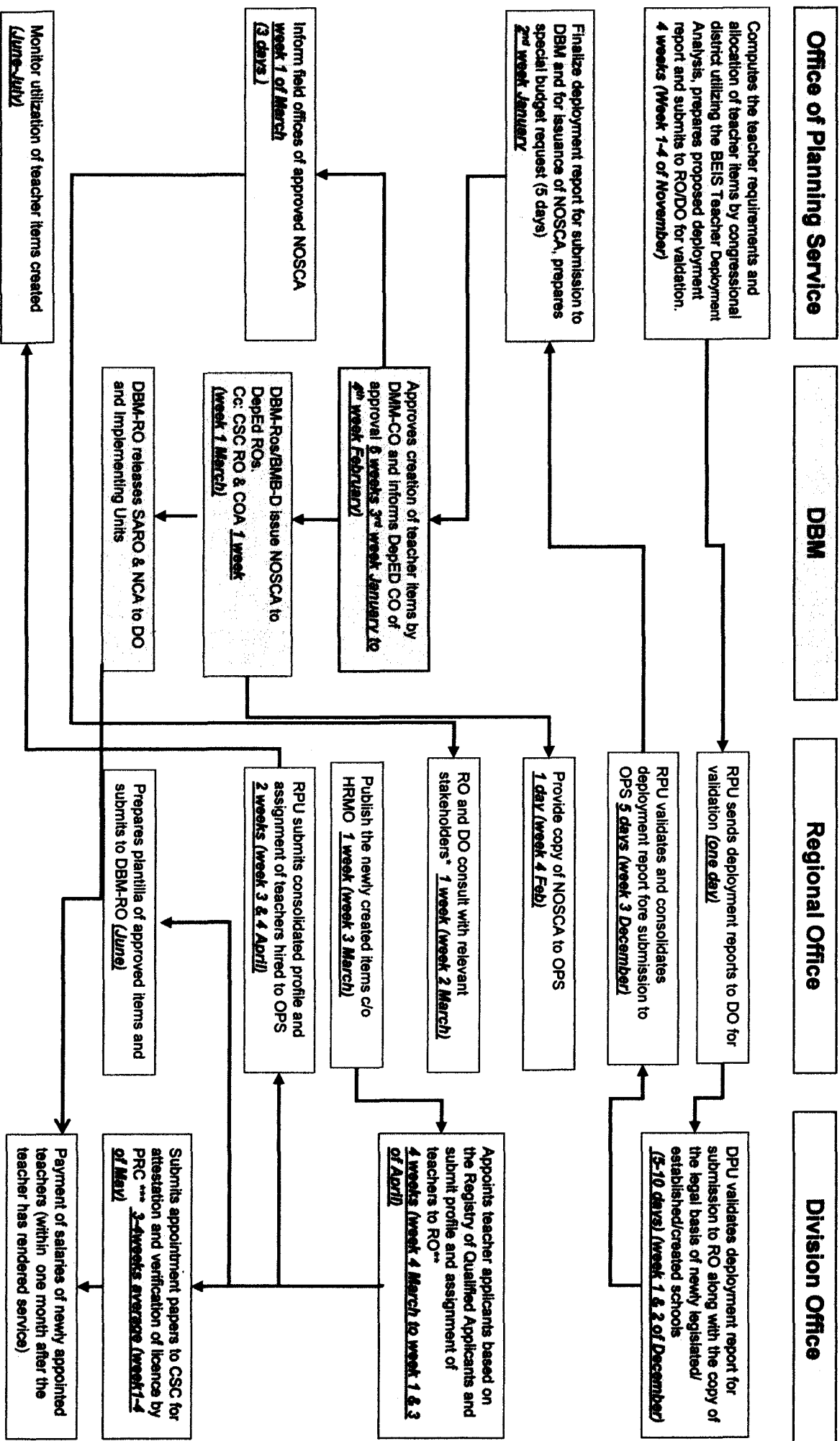


Revised Flowchart on Allocation and Deployment of New Teacher Items

Effective SY 2012-2013



Revised: Dec. 9, 2011

* Consultation means informing the concerned stakeholders on the number of items allocated for their specific areas/districts

** In the case ARMM, RO appoints teacher - applicants

*** Applies to non-CSC accredited DepEd field offices. Verification of eligibility by CSC to be done with 3 months from date of attestation of appointment (per CSC Memo. # 57 s. 2011)